

# The FLUX mixing pump F 426

Flexible coupling  
between pump and  
motor

Adjusting lever to set  
the pump to mixing or  
discharge

Mixing openings

Packaging of the mechanical  
seal and rotary shaft seal  
adjacent to each other ensures  
the maximum integrity of the  
sealed inner tube

Impeller in ETFE



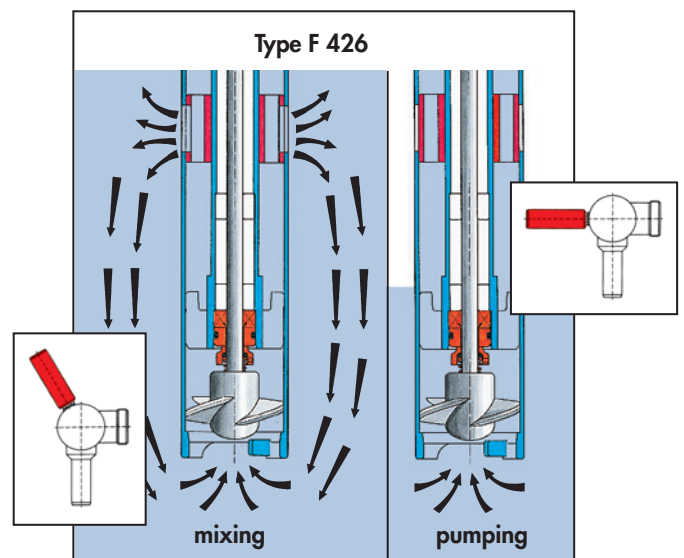
You want to mix and pump  
liquids within a closed drum or  
an open container.

By turning the adjusting lever, the  
pump can either mix or pump.  
Liquids can also be mixed even  
when being transferred to  
another container.

### Special advantages:

- No changes in the outer  
diameter of the pump tube in  
stainless steel as the pump  
works without any additional  
components
- Light and handy design
- Pump/drum connection glands  
are also in vapour-proof  
version available

Here the FLUX mixing pump is  
the right pump for you.



Explosion proof versions available

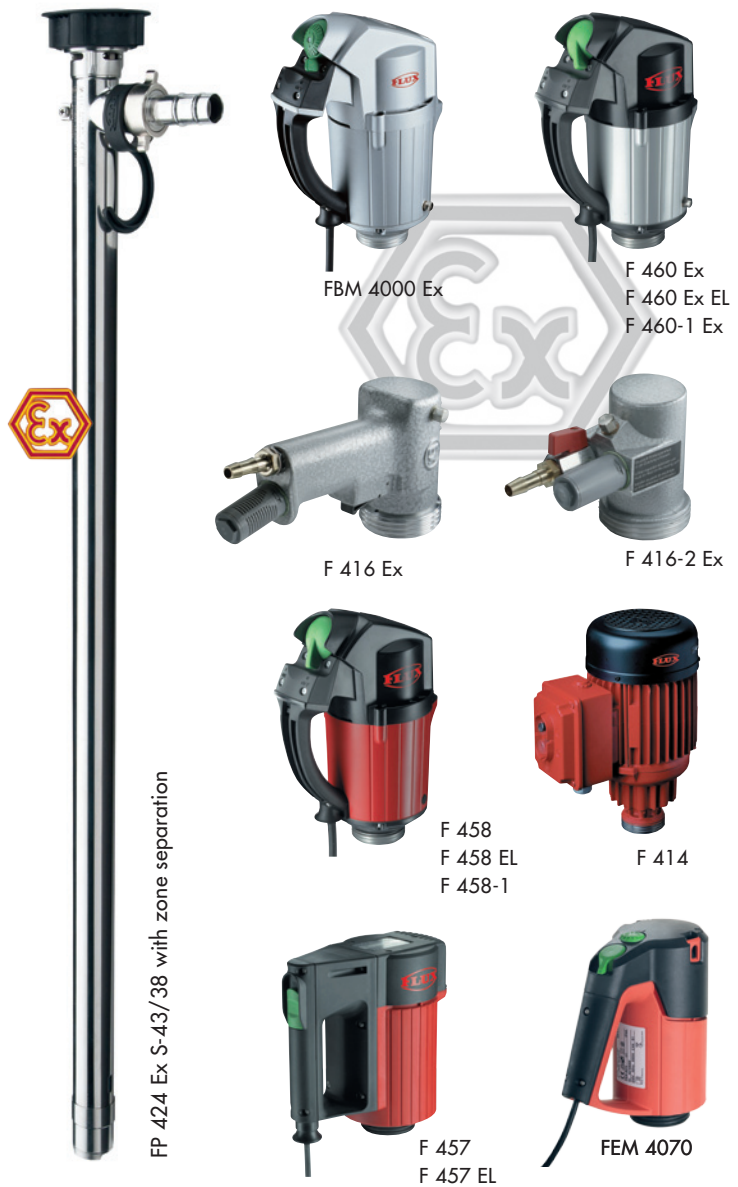
# FLUX drum pumps in stainless steel

FLUX drum pumps in stainless steel 316 Ti – except sanitary pump F 427 S – are approved according to ATEX-Directive 94/9/EC for use in Zone 0, temperature class T4, for transferring highly flammable liquids out of portable drums or containers.

With the help of the performance charts you can compare the delivery rates achieved by each pump model powered by the various FLUX motors. Detailed motor data are shown on pages 21 to 29.

When using the pump with a discharge hose (of approx. 6,5 ft) and a quick action tap, the delivery rate will be approx. 18 GPM. Depending on the motor type a 55 GAL drum can be emptied within 3 – 4 minutes. The delivery rates shown in the performance charts are obtained at the outlet connection of the pump.

Special version for horizontal use on request.

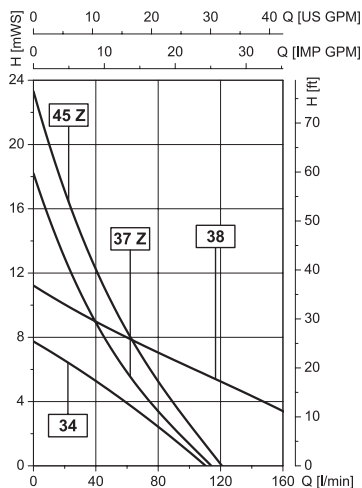


↗ This pump version will achieve a higher delivery rate!

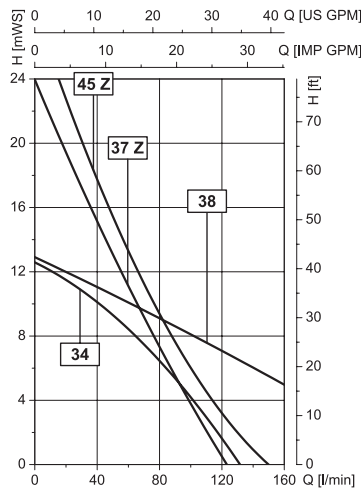
↗ This pump version will achieve a higher delivery head!

Max. viscosity per pump and motor, please see pages 28 and 29.

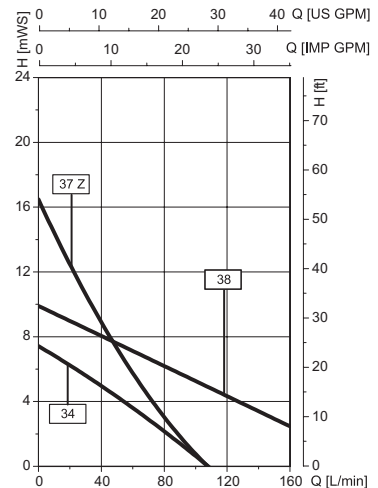
motor FBM 4000 Ex



motor F 416 Ex, F 416-1 Ex or F 416-2 Ex



motor FEM 4070



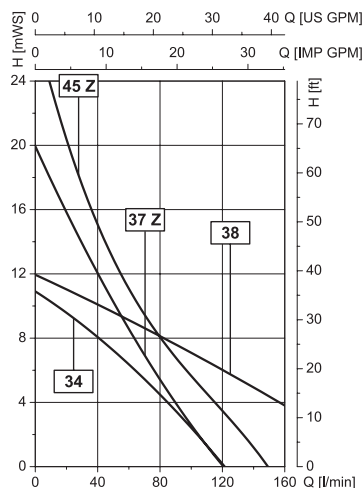
**drum pump (tube set) in stainless steel, thread on outlet G 1 1/4 male, motors on page 21**

type/curve	FP 424 Ex S-43/38 <sup>1</sup>	FP 424 Ex S-43/37 Z <sup>1</sup>	FP 424 Ex S-50/45 Z <sup>1</sup>
version			
seal type	sealless within the liquid section		
material	shaft in stainless steel 316 Ti, impeller in ETFE, o-ring in FKM		
max. temperature	212 °F		
outer-Ø	1 11/16"	1 11/16"	2"
part no. / weight			
immersion length 27"	424 22 007 / 4,85 lbs	424 22 107 / 4,85 lbs	424 22 207 / 6,61 lbs
immersion length 39"	424 22 010 / 6,39 lbs	424 22 110 / 6,39 lbs	424 22 210 / 8,81 lbs
immersion length 47"	424 22 012 / 7,27 lbs	424 22 112 / 7,27 lbs	424 22 212 / 10,6 lbs
type/curve	FP 425 Ex S-41/34 <sup>1,2</sup>	F 426 S-41/38	F 427 S-43/38
version	99,98 % drum emptying	mixing pump	sanitary pump
seal type	mechanical seal in ceramic oxide, PTFE/carbon, o-rings in FKM		sealless within the liquid section
material	shaft in stainless steel 316 Ti, seal in FKM, impeller in ETFE		shaft in stainless steel 316 Ti, impeller in ETFE, o-ring in FKM
max. temperature	212 °F		
outer-Ø	1 19/32"	1 19/32"	1 11/16"
part no. / weight			
immersion length 27"	425 22 008 / 6,61 lbs	-	427 20 307 / 6,61 lbs
immersion length 39"	425 22 011 / 8,37 lbs	426 20 010 / 8,37 lbs	427 20 310 / 6,39 lbs
immersion length 47"	425 22 013 / 9,70 lbs	426 20 012 / 9,70 lbs	427 20 312 / 7,27 lbs
type/curve	F 430 S-41/38 <sup>1</sup>	F 430 S-41/37 Z <sup>1</sup>	F 430 S-50/45 Z
version			
seal type	mechanical seal in ceramic oxide, PTFE/carbon, o-rings in FKM		
material	shaft in stainless steel 316 Ti, seal in FKM, impeller in ETFE		
max. temperature	212 °F		
outer-Ø	1 19/32"	1 19/32"	2"
part no. / weight			
immersion length 27"	430 20 107 / 5,29 lbs	430 20 407 / 5,29 lbs	430 20 207 / 7,49 lbs
immersion length 39"	430 20 110 / 6,61 lbs	430 20 410 / 6,61 lbs	430 20 210 / 9,92 lbs
immersion length 47"	430 20 112 / 7,93 lbs	430 20 412 / 7,93 lbs	430 20 212 / 11,46 lbs
accessories	hose connection complete with nut G 1 1/4 female DN 19 part no. 959 04 061		DN 25 part no. 959 04 041

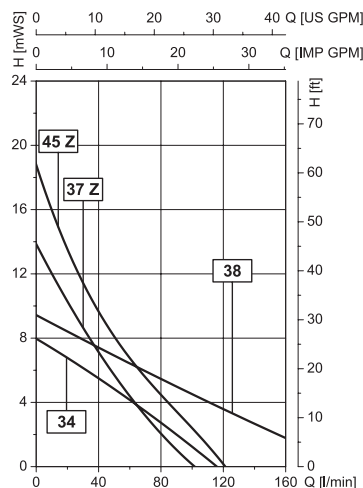
Pump models in immersion lengths of 8 – 118" (in steps of 4") on request

<sup>2</sup> Model for higher delivery head on request.

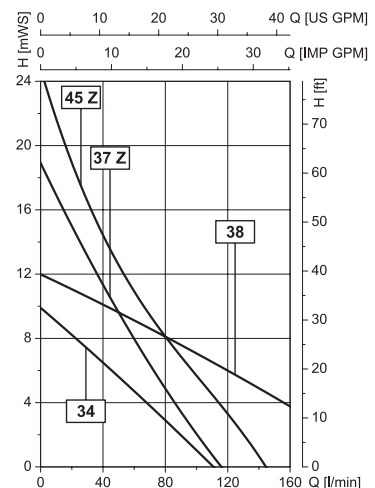
**motor F 457 or F 457 EL**



**motor F 458, F 458 EL, F 460 Ex or F 460 Ex EL**

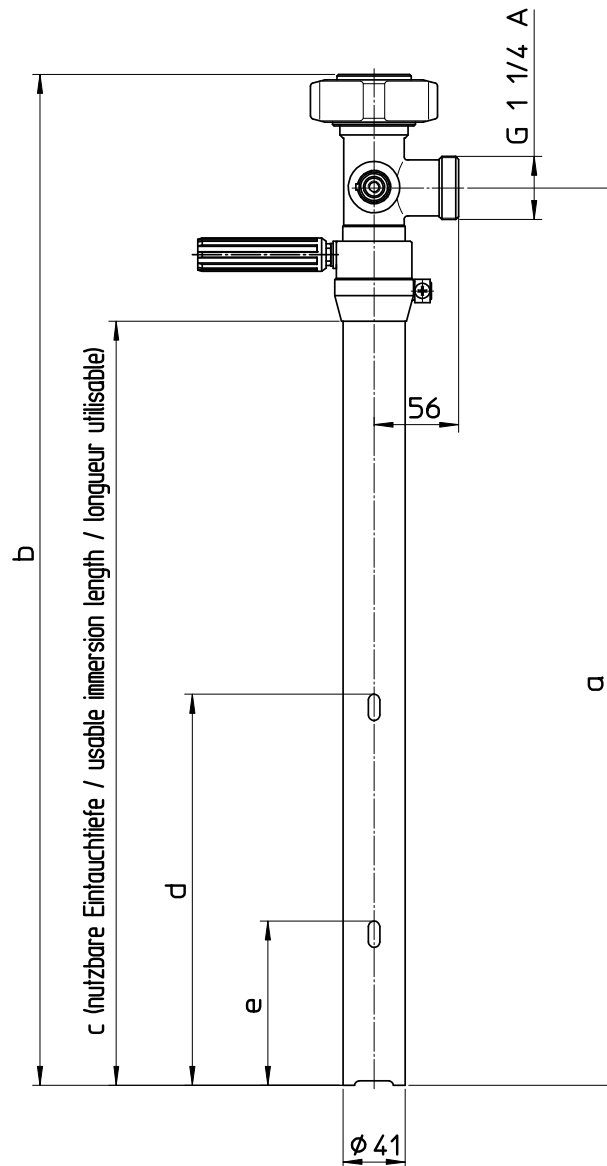


**motor F 458-1 or F 460-1 Ex**



<sup>1</sup> with zone separation

Values ± 10% with water (68 °F) and a voltage of 230 Volt. Curves with a voltage of 120 Volt / 60 Hz are similar.



Bemerkung:

Bei Montage von Motor und Pumpe reduziert sich die Gesamthöhe um 16 mm!

Note:

With motor and pump assembled, the total length reduces by 16 mm!

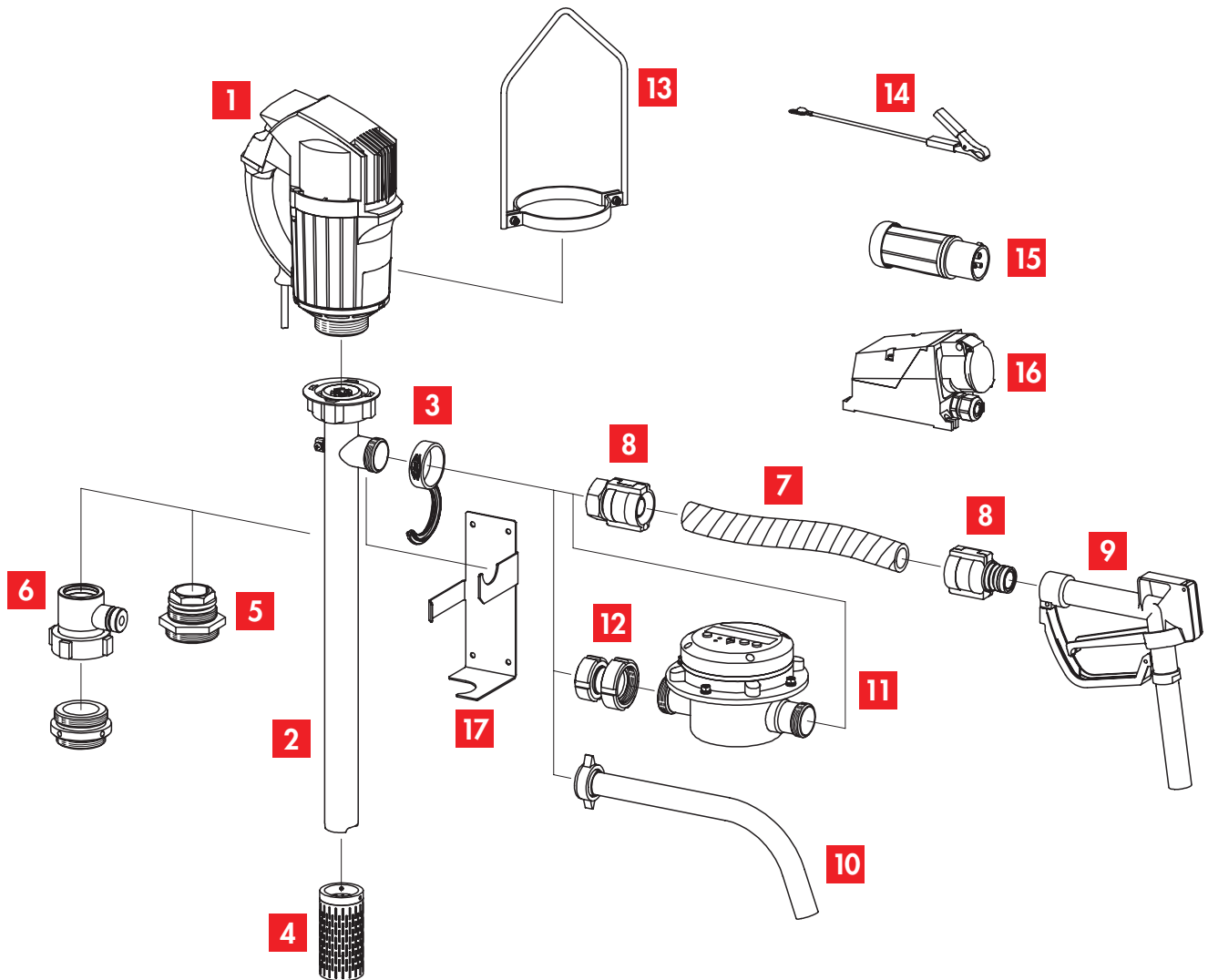
Nota:

La hauteur totale se réduit de 16 mm lorsque le moteur est monté sur la pompe!

1500	1606	1681	1318	502	352
1200	1306	1381	1218	352	202
1000	1106	1181	1018	352	202
Eintauchtiefe Immersion length Longueur	a	b	c	d	e

# general view FLUX drum and container pump with accessories for highly flammable liquids (explosion-proof version)

It is not merely the pump that makes the FLUX solution a perfect equipment. On this page you will find a general view on the explosion-proof FLUX drum pump together with all accessories for transferring highly flammable liquids. With all items in bold printing you will have a ready to use pump assembly, which may be completed by other accessories shown on this page.



- 1** drive motor

---

- 2** drum pump (pump tube set)

---

- 3** FLUX-clip

---

- 4** suction strainer

---

- 5** compression gland

---

- 6** fume gland type FES

---

- 7** flexible hose\*

---

- 8** swaged hose fittings\*

---

- 9** quick action tap

---

- 10** discharge spout

---

- 11** liquid meter

---

- 12** connecting piece FMC 100

---

- 13** carrying handle

---

- 14** earth (ground) wire

---

- 15** explosion-proof plug

---

- 16** explosion-proof socket

---

- 17** wall bracket

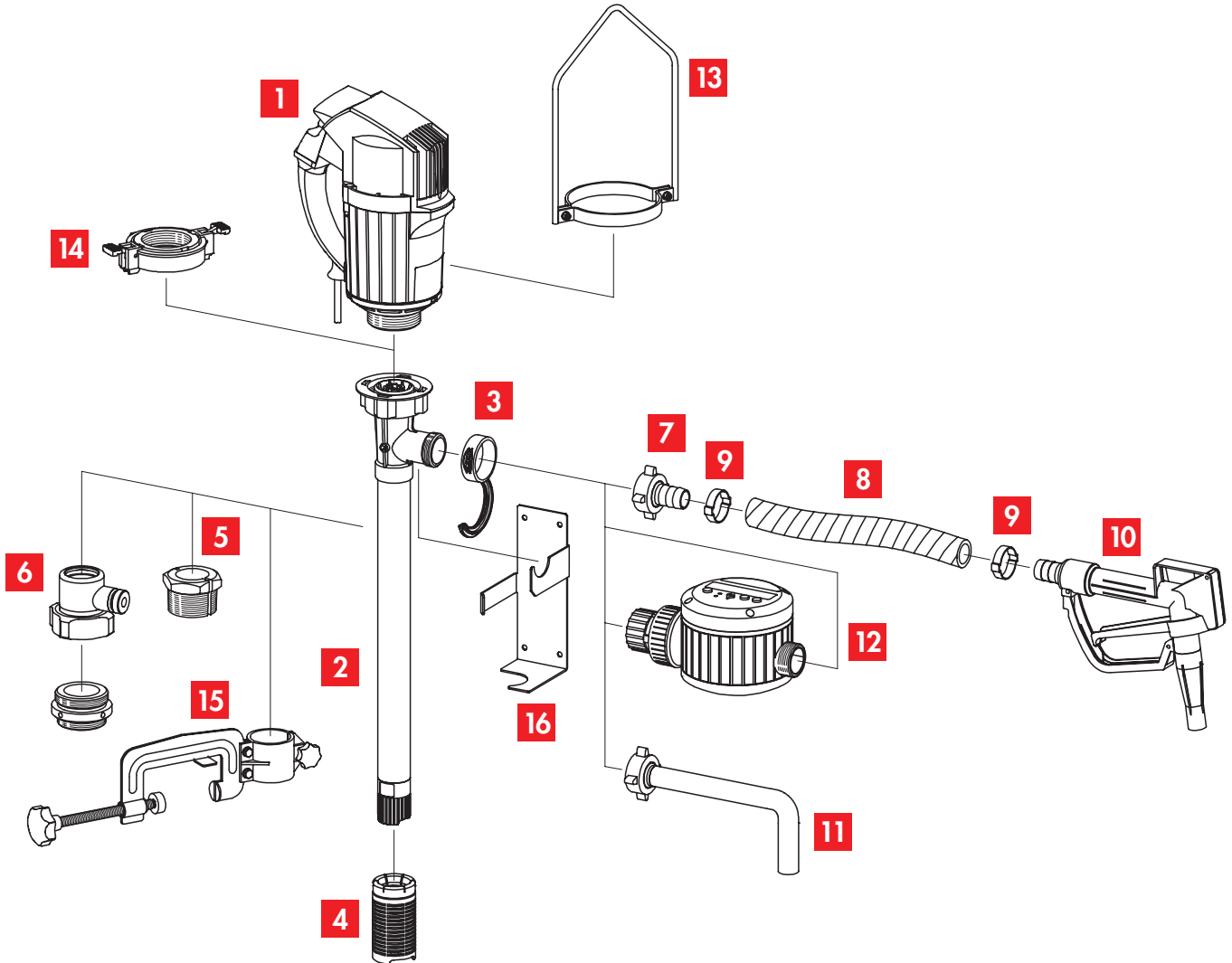
---

\* On request also available completely mounted and tested for electrical conductivity.

# general view FLUX drum and container pump with accessories for non-flammable liquids



It is not merely the pump that makes the FLUX solution a perfect equipment. On this page you will find a general view on the FLUX drum pump together with all accessories for transferring non-flammable liquids. With all items in bold printing you will have a ready to use pump assembly, which may be completed by other accessories shown on this page.



- |                                    |  |
|------------------------------------|--|
| <b>1</b> drive motor               | <b>9</b> hose clip                           |
| <b>2</b> drum pump (pump tube set) | <b>10</b> quick action tap                   |
| <b>3</b> FLUX-clip                 | <b>11</b> discharge spout                    |
| <b>4</b> suction strainer          | <b>12</b> liquid meter                       |
| <b>5</b> compression gland         | <b>13</b> carrying handle                    |
| <b>6</b> fume gland type FES       | <b>14</b> quick action coupling type SSK 400 |
| <b>7</b> hose connection           | <b>15</b> attachment clamp                   |
| <b>8</b> flexible hose*            | <b>16</b> wall bracket                       |