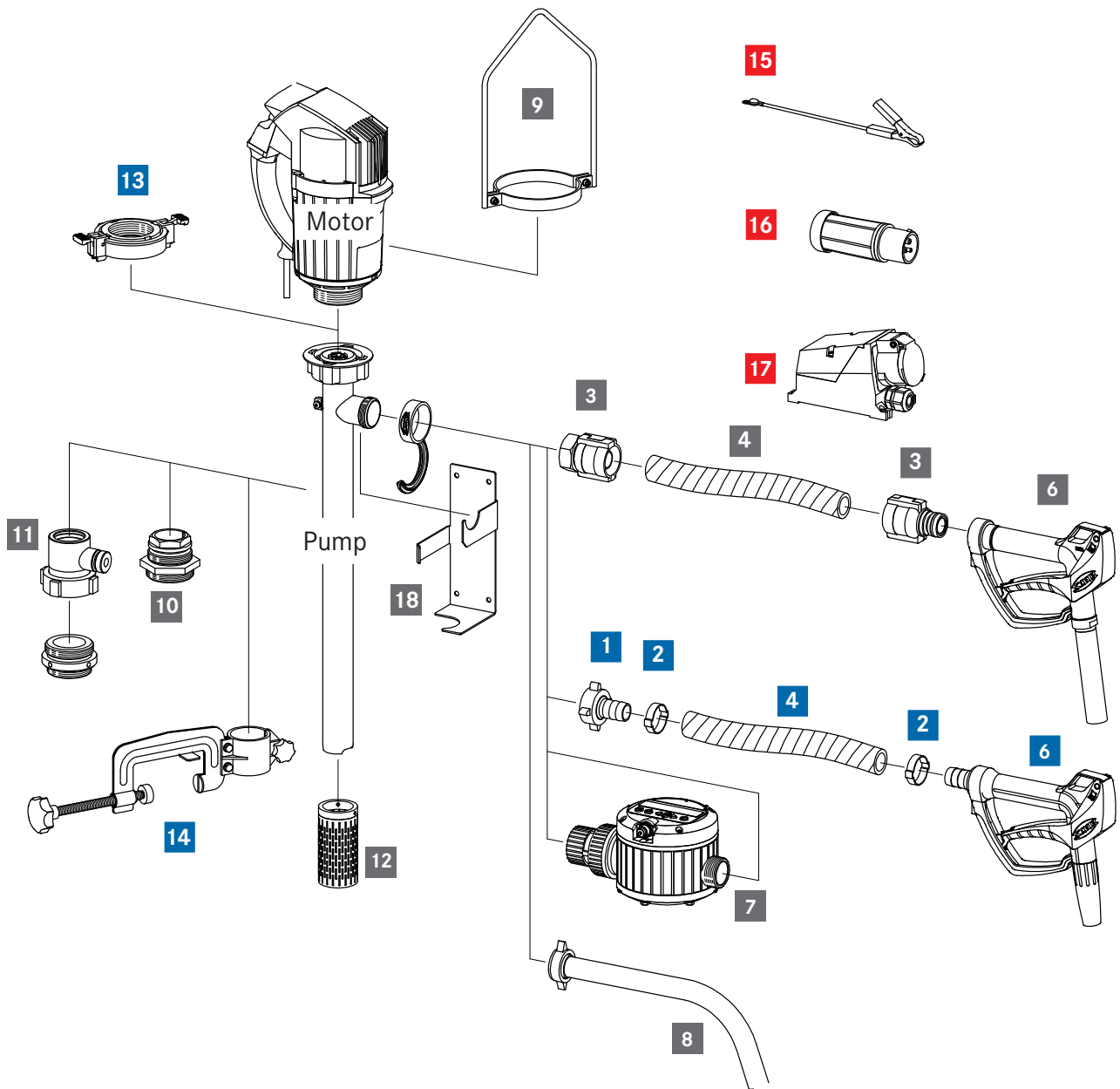


# Overview of FLUX Accessories

For 4 Series Polypropylene Drum & Container Pumps



More than just pumps



- 1 Hose connection
- 2 Hose clip
- 3 Swaged hose fitting
- 4 Hose
- 5 Hose kit (3+4 = hose kit)
- 6 Hand nozzle

- 7 Flow meters
- 8 Discharge spout
- 9 Carrying handle
- 10 Compression gland
- 11 FLUX fume gland
- 12 Suction strainer

- 13 Quick action coupling
- 14 Attachment clamp
- 15 Earth (ground) wire
- 16 Explosion-proof plug
- 17 Explosion-proof socket
- 18 Wall bracket

Safe for use in hazardous areas

Not for use in hazardous areas

Safe for use in both hazardous and non-hazardous areas

**FLUX PUMPS CORPORATION**  
 300 Townpark Drive, Suite 130  
 Kennesaw, GA 30144, USA  
 Phone 800-367-3589  
 info@fluxpumpsusa.com  
 www.fluxpumpsusa.com

# Overview of FLUX Accessories

For 4 Series Polypropylene Drum & Container Pumps



More than just pumps

Map Key	Part Number	Description	
1	959.04.053	3/4" Hose Barb Connection	
	959.04.052	1" Hose Barb Connection	
	959.04.054	1-1/4" Hose Barb Connection	
2	959.13.241	3/4" Hose Clamp	
	959.13.243	1" Hose Clamp	
	959.13.248	1-1/4" Hose Clamp	
4	FLU.02.057	3/4" Braided PVC Hose (sold per foot)	
	FLU.02.104	1" Braided PVC Hose (sold per foot)	
6	001.12.510	3/4" Hand Nozzle, FKM elastomers	
	001.12.506	3/4" Hand Nozzle, EPDM elastomers	
	001.12.504	1" Hand Nozzle, FKM elastomers	
	001.12.510	1" Hand Nozzle, EPDM elastomers	
7	A0400005	FMC 100, Polypropylene, EPDM elastomers	
	A0400007	FMC 100, Polypropylene, FFKM elastomers	
	A0400009	FMC 100, Polypropylene, FEP elastomers	
8	959.07.009	Discharge Spout, Polypropylene	
9	001.10.533	Carrying Handle, F457	
	001.10.557	Carrying Handle, F458, F460, FBM4000Ex	
10	001.14.054	Compression Gland, PP, Conductive, 40/41mm	
	001.14.062	Compression Gland, PP, Conductive, 50mm	
11	001.14.181	Fume Gland, PP, Upper Valve, 40mm	
	001.14.182	Fume Gland, PP, Upper Valve, 41mm	
	001.14.243	Fume Gland, PP, Upper Valve, 50mm	
	001.14.218	Fume Gland, PP, Lower Ring, G2, 40/41mm	
	001.14.238	Fume Gland, PP, Lower Ring, G2, 50mm	
12	001.10.200	Suction Strainer, PP, 40/41mm	
	001.10.205	Suction Strainer, PP, 50mm	
13	001.10.802	Quick Action Coupling, SSK	
14	001.10.601	Attachment Clamp, Steel/Zinc Plated, 40/41mm	
	001.10.603	Attachment Clamp, Steel/Zinc Plated, 50mm	
18	001.10.426	Wall Bracket	